

# The Titanic

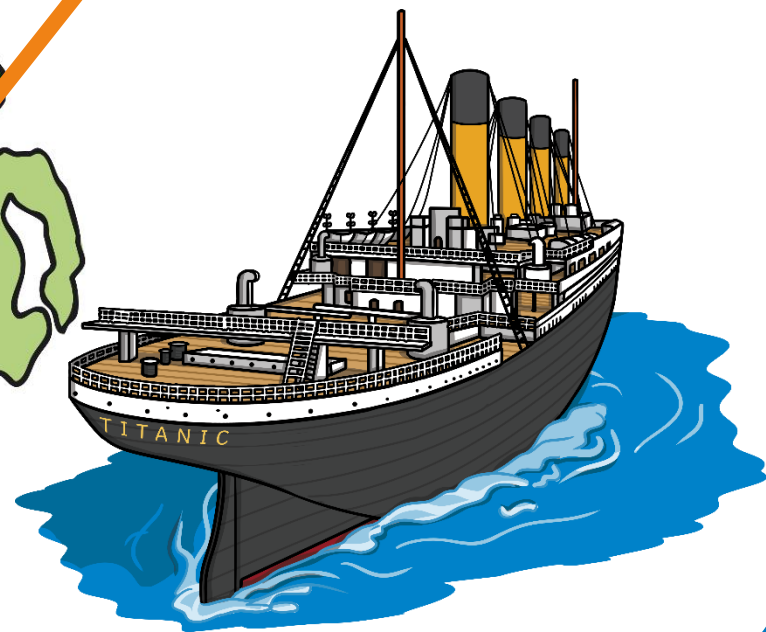
## Timeline



twinkl

# 1908 -1909

Construction of the largest passenger steam ship in the world - Titanic, begins in Belfast, Ireland.

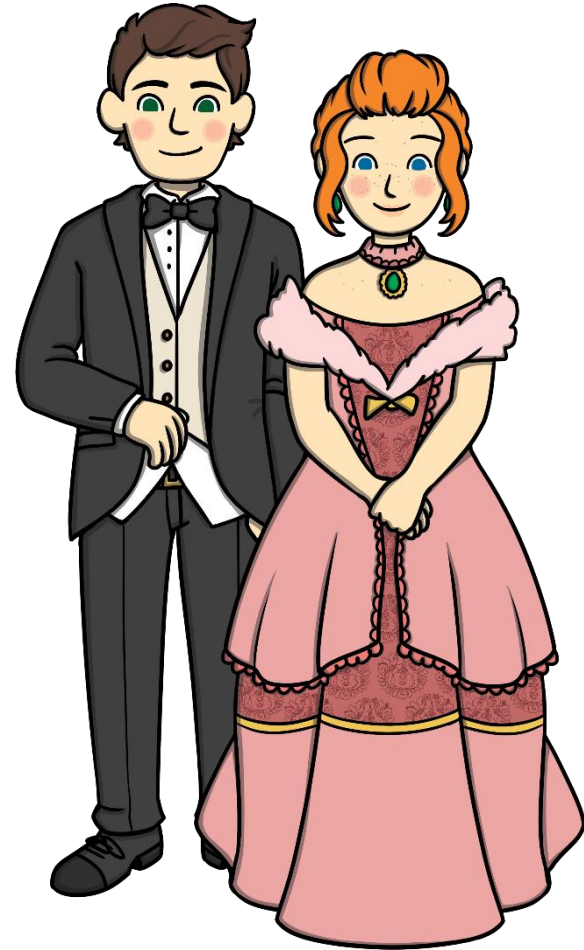


# April 10<sup>th</sup> 1912

11:30am

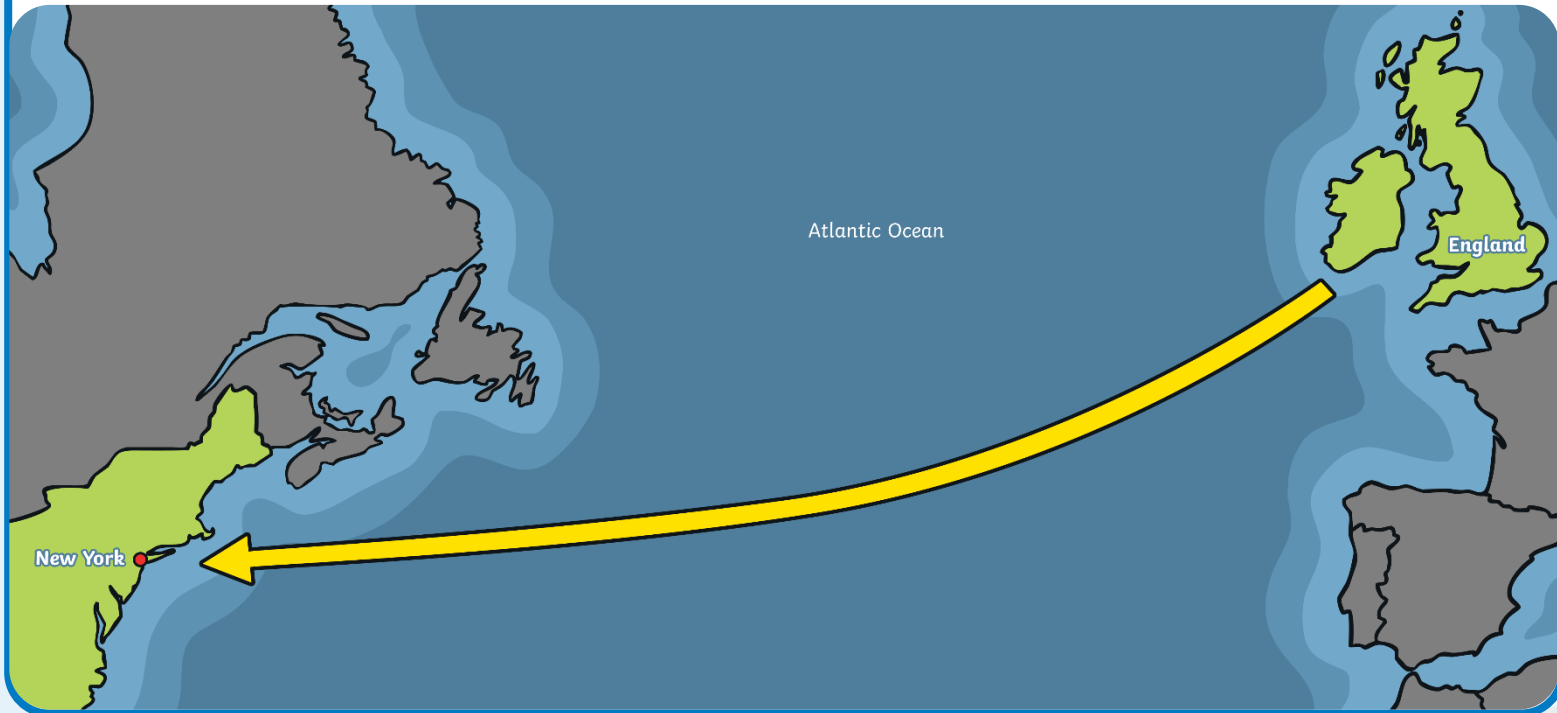
Passengers arrive in Southampton excited to board the ship.

The Titanic sets off on her maiden voyage at midday.



# April 12<sup>th</sup> – 13<sup>th</sup> 1912

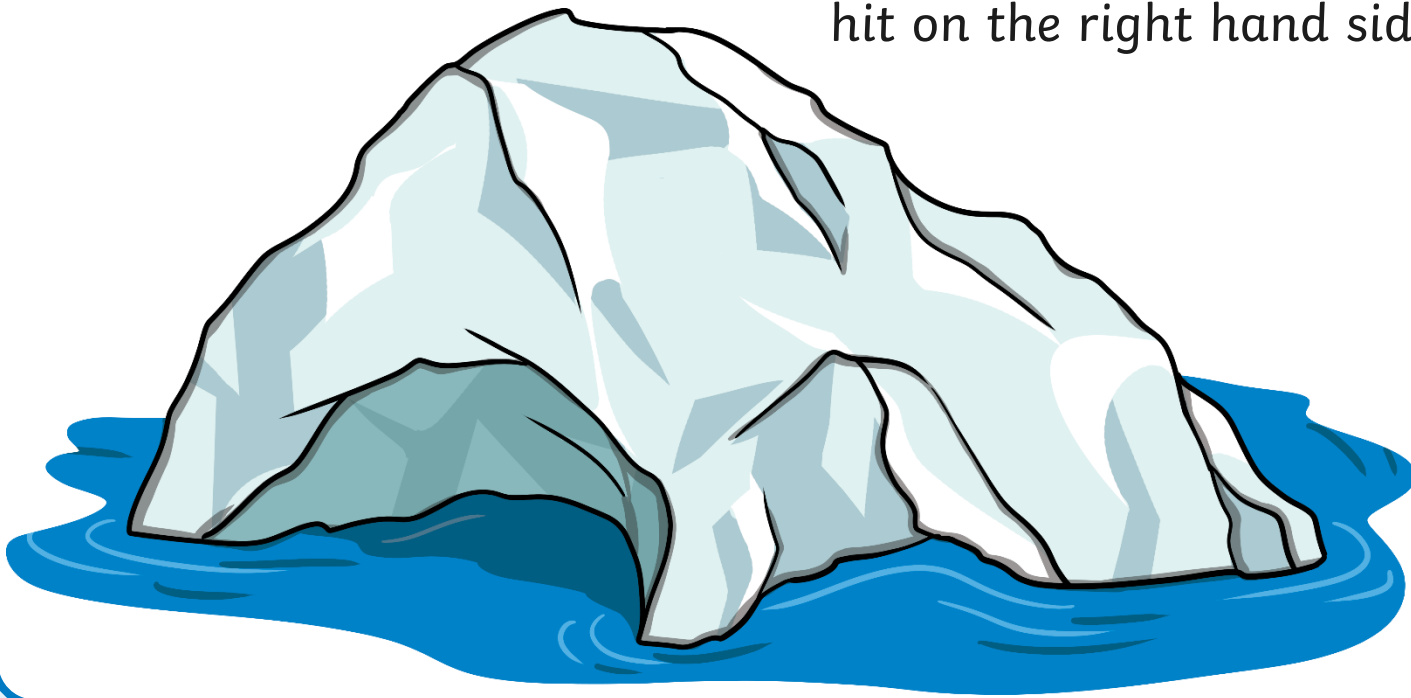
The Titanic sails through calm waters towards New York. It carries 2,223 people on board.



# April 14<sup>th</sup> 1912

11:40pm

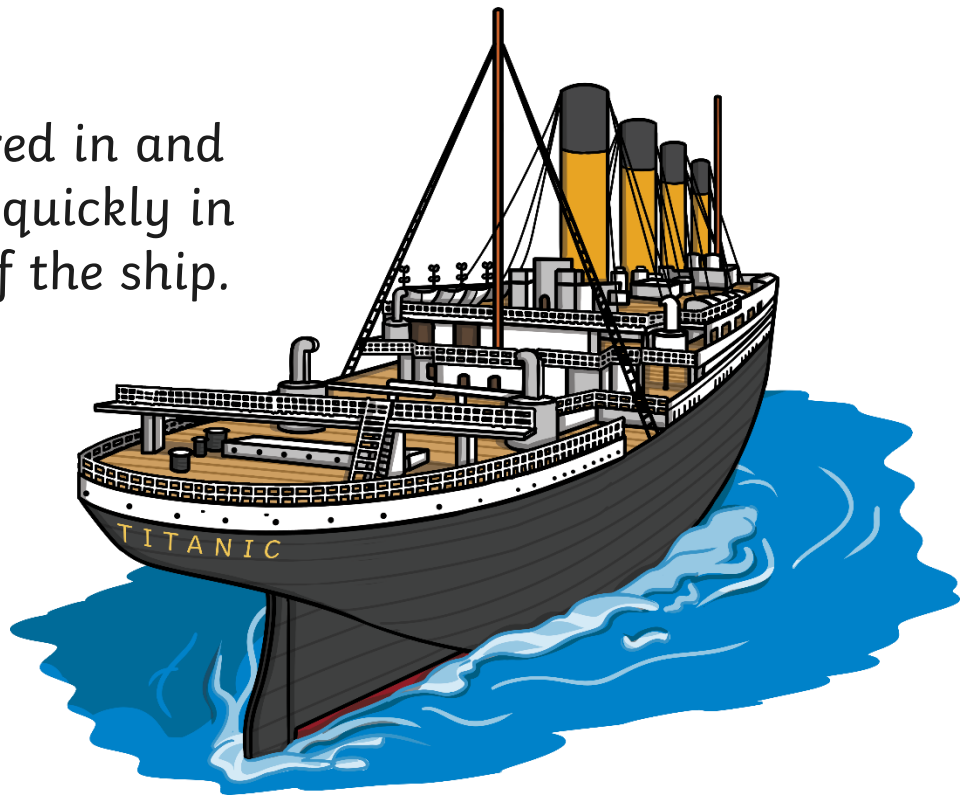
The lookouts see an iceberg dead ahead. The Titanic tries to steer round it and is hit on the right hand side.



# April 14<sup>th</sup> 1912

11:50pm

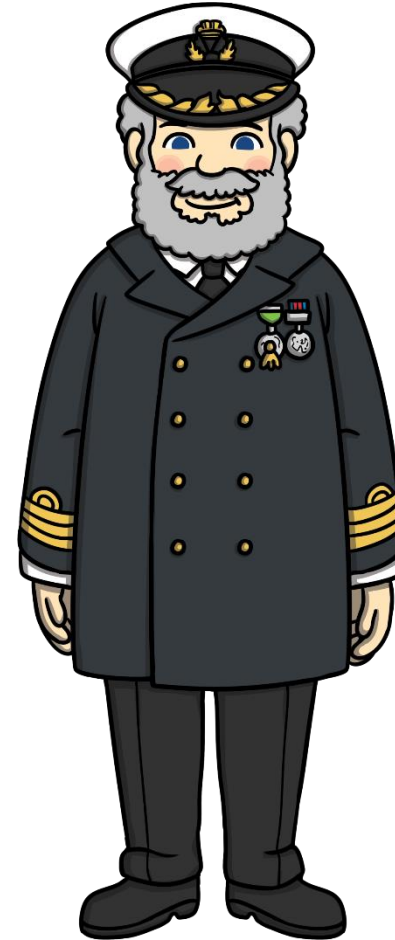
Water has poured in and risen extremely quickly in the front part of the ship.



# April 15<sup>th</sup> 1912

12:00am

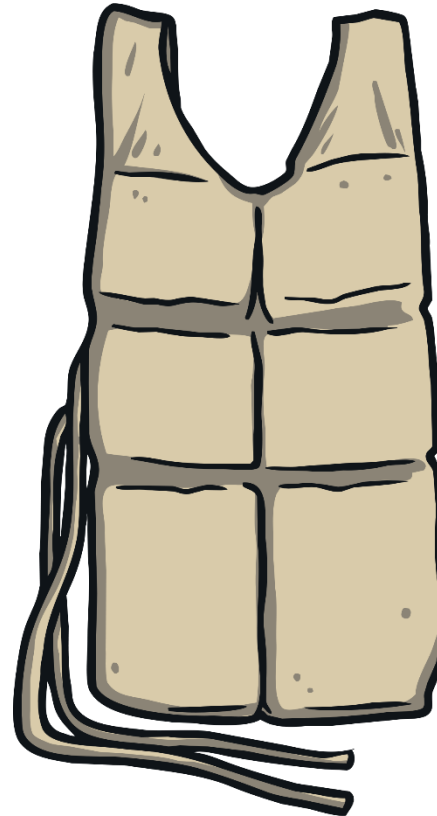
The captain is told the ship can only stay afloat for a couple of hours. He gives order to call for help over the radio.



# April 15<sup>th</sup> 1912

12:05am

The lifeboats are uncovered and passengers and crew get ready on deck. There is only room for half of the people on board in the lifeboats.

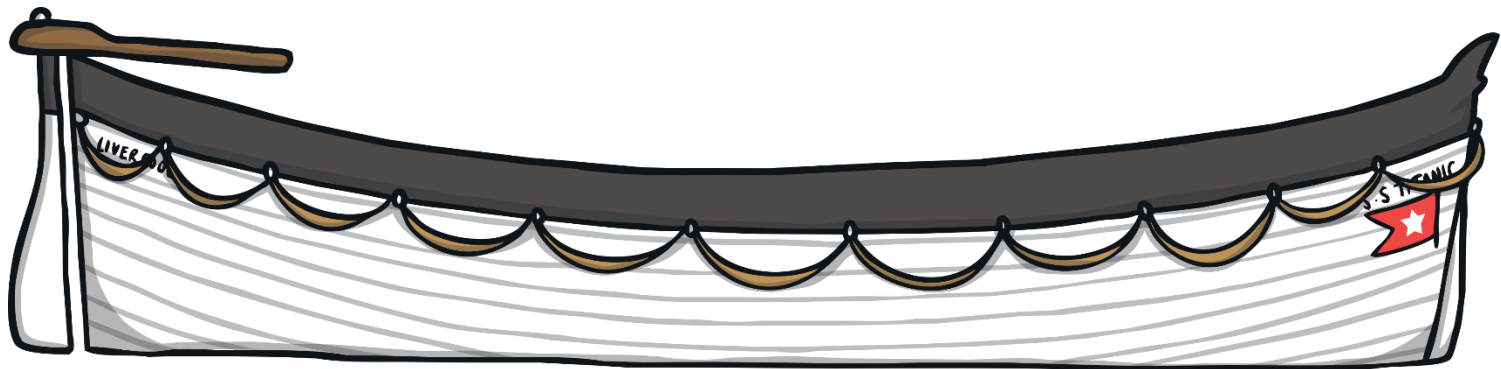




# April 15<sup>th</sup> 1912

12:25am

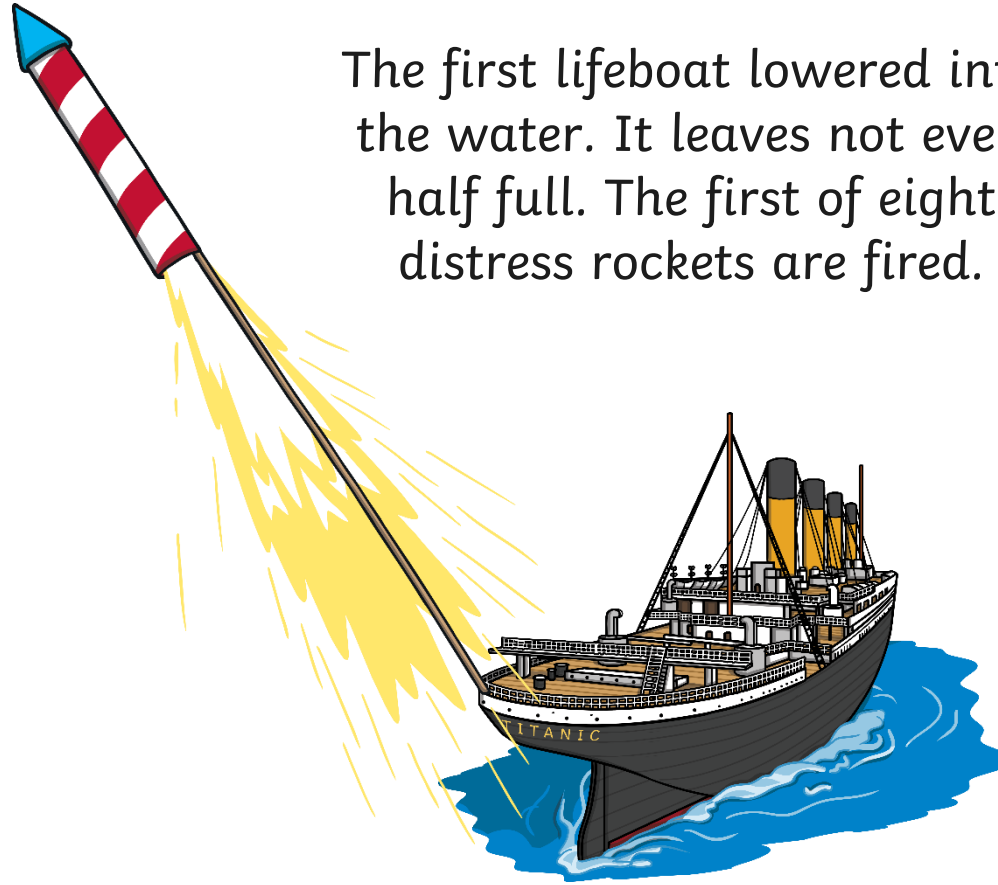
Lifeboats are loaded with women and children first.  
Another ship, The Carpathia, picks up the distress call about 58 miles and sails as quickly as possible to help her.



# April 15<sup>th</sup> 1912

12:45am

The first lifeboat lowered into the water. It leaves not even half full. The first of eight distress rockets are fired.

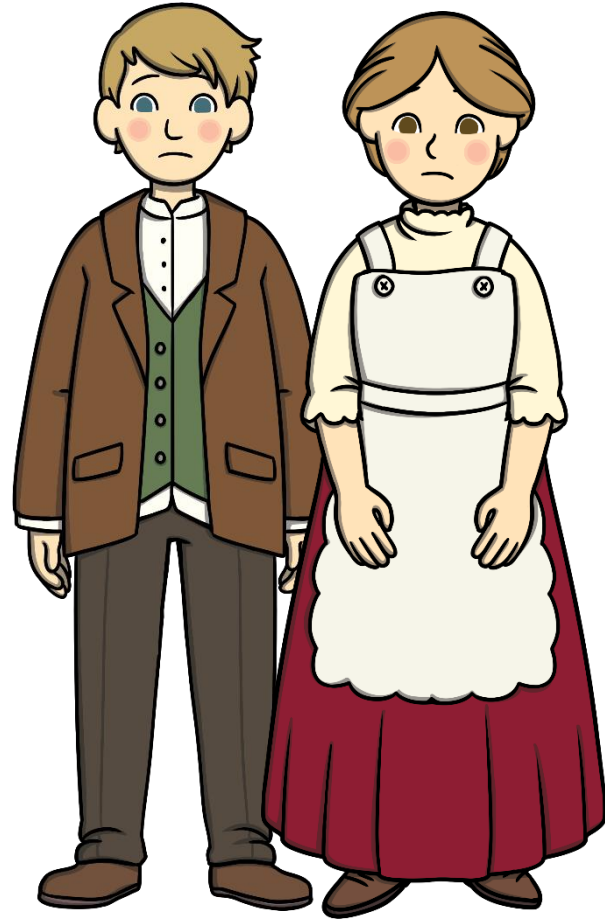


# April 15<sup>th</sup> 1912

2:05am

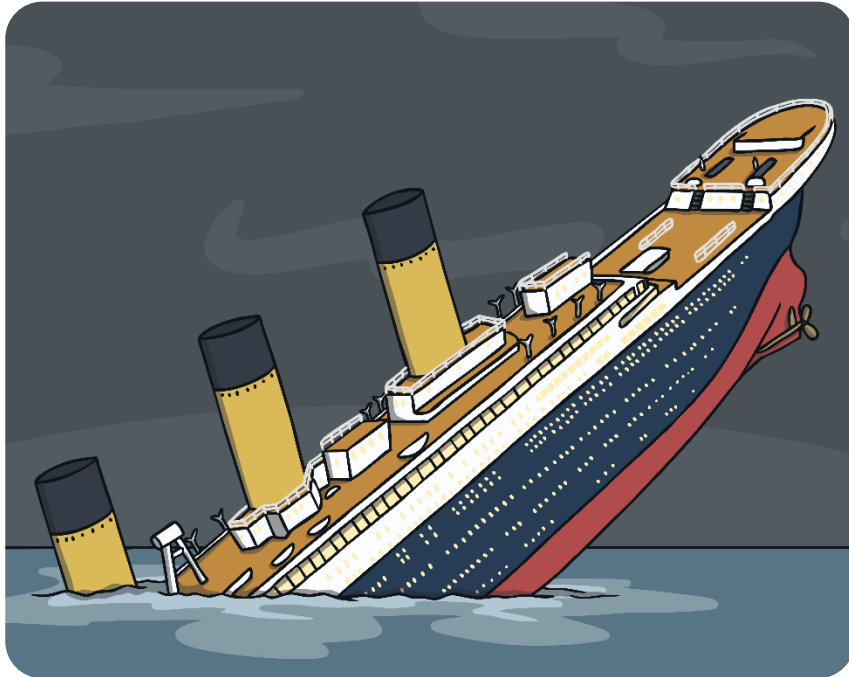
The last lifeboat is lowered in to the water.

Over 1,500 people remain stranded on the ship. Titanic's deck becomes steeper and the rear of the ship breaks off.



# April 15<sup>th</sup> 1912

2:20am



The remaining ship levels out for a few moments before slowly filling with more water. The water pulls the ship back high into the air before pulling it under. Remaining passengers are stranded in the icy waters. Most of them are unable to be saved.

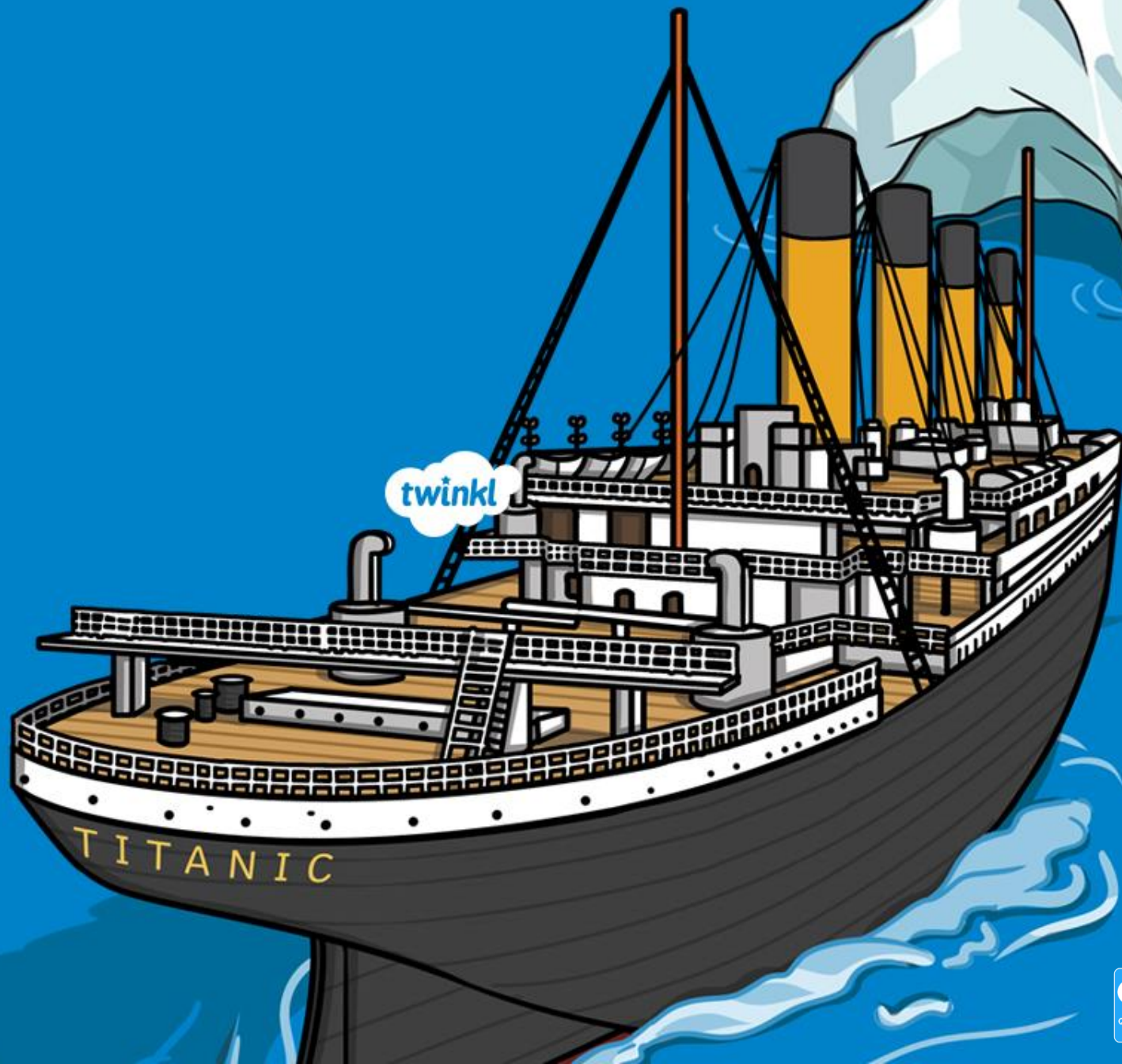
# April 15<sup>th</sup> 1912

8:50am

The Carpathia finally travels away from any remaining wreckage and makes its way to New York.

She has managed to save only 705 passengers and crew.





twinkl

TITANIC