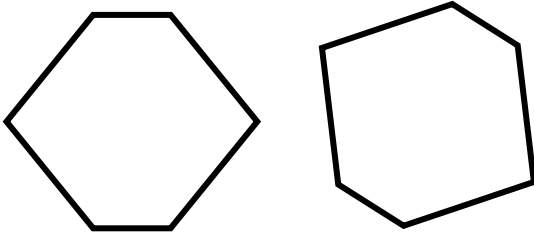
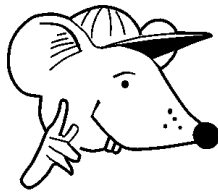




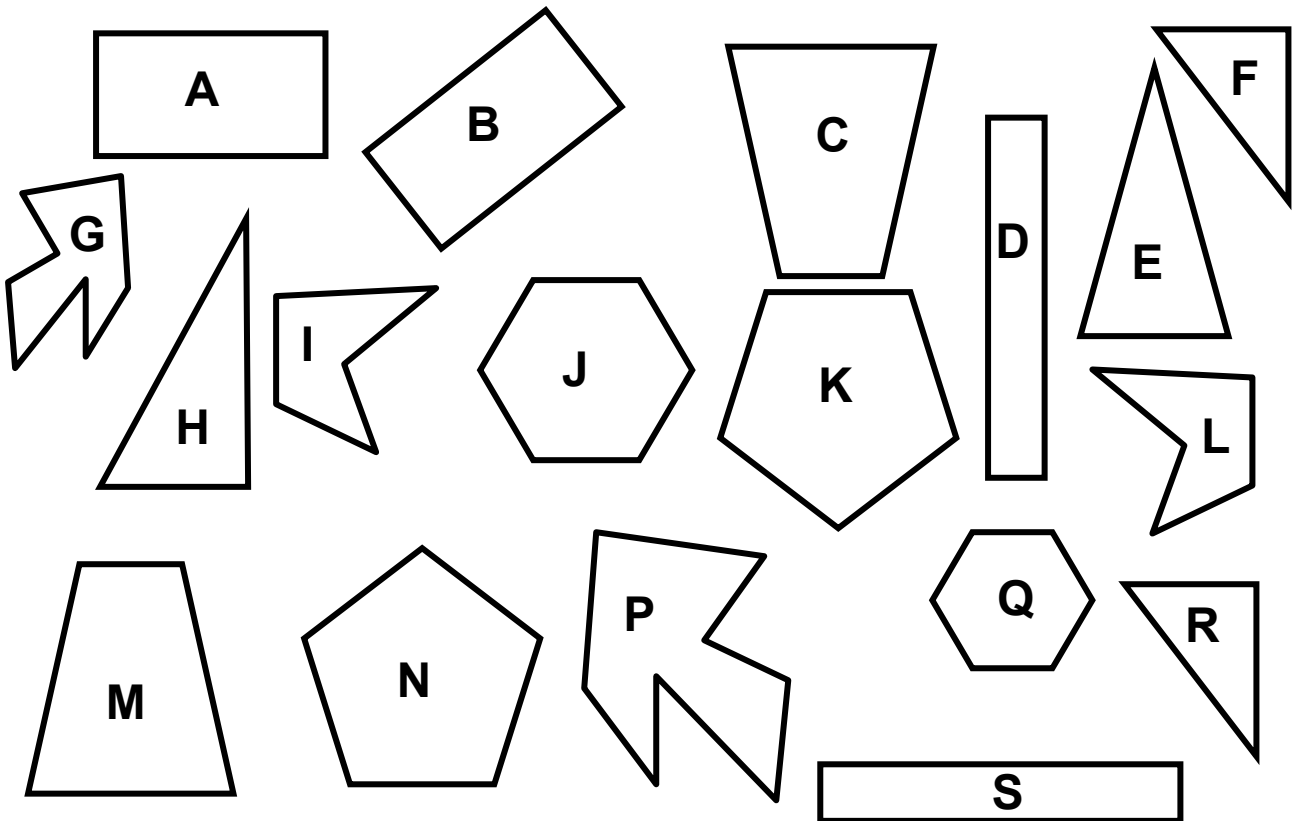
Do you know about congruent shapes?
Congruent shapes are shapes that have exactly the same length of sides and the same angles.



These two shapes are **congruent**, even though one is turned round a little. They have the same length sides and the same angles.



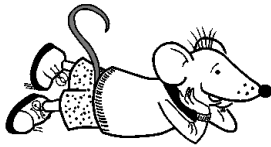
Find **pairs** of shapes that are congruent in this group:
(You might find tracing paper helpful.)



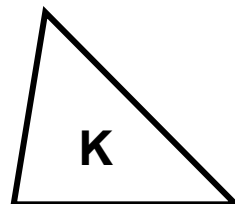
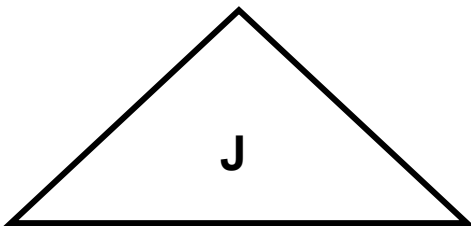
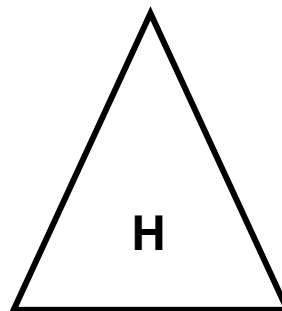
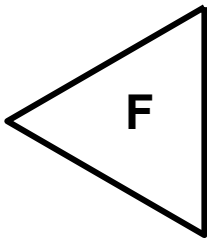
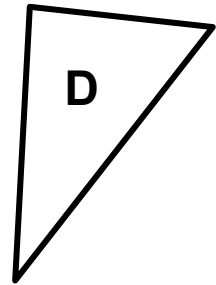
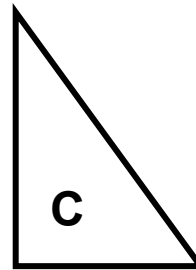
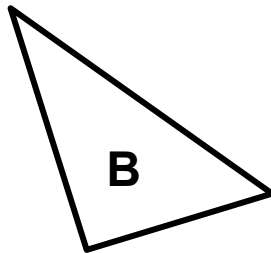
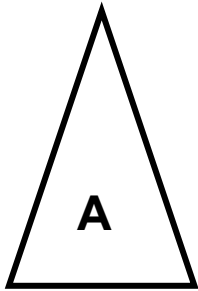
A **scalene** triangle is one which has no sides the same length and no equal angles.

How do you know that, Subby?

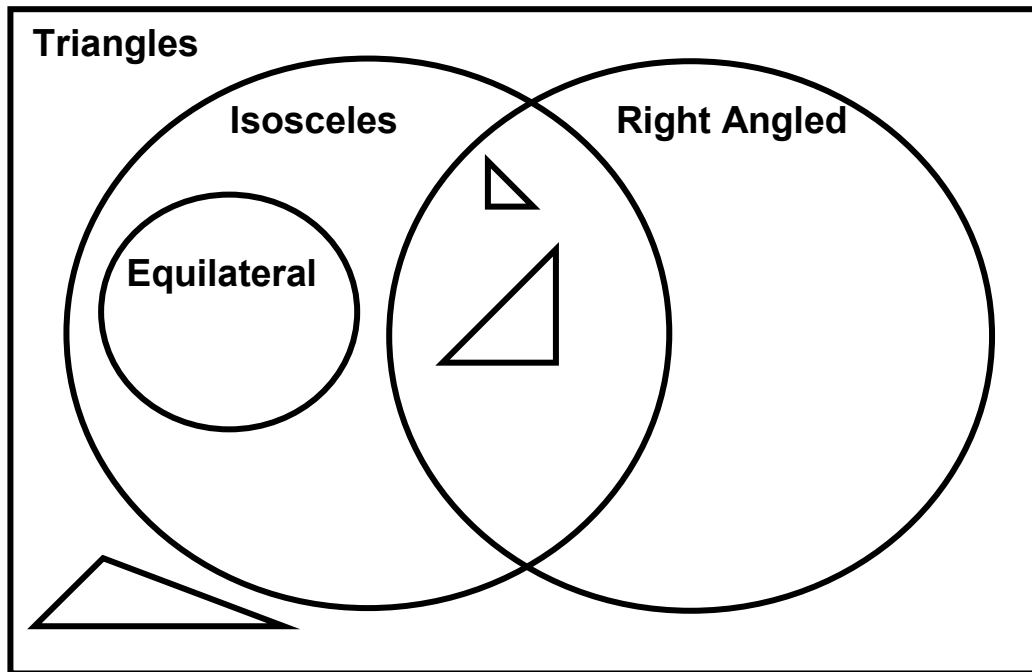
I'm a genius!



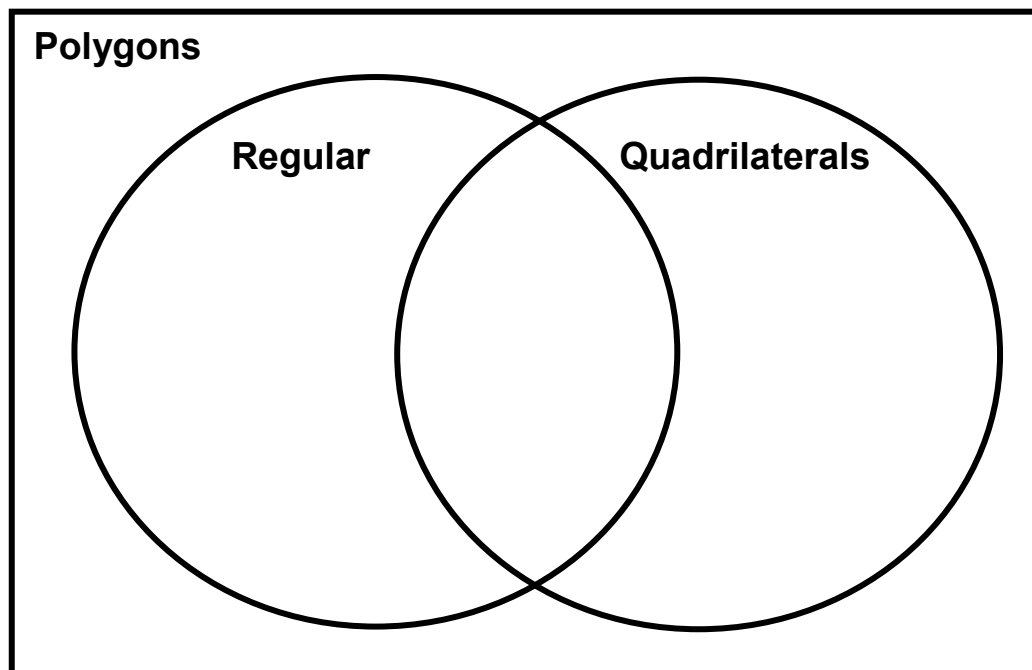
Which of these triangles are **scalene** triangles? You may need to measure some of the sides.



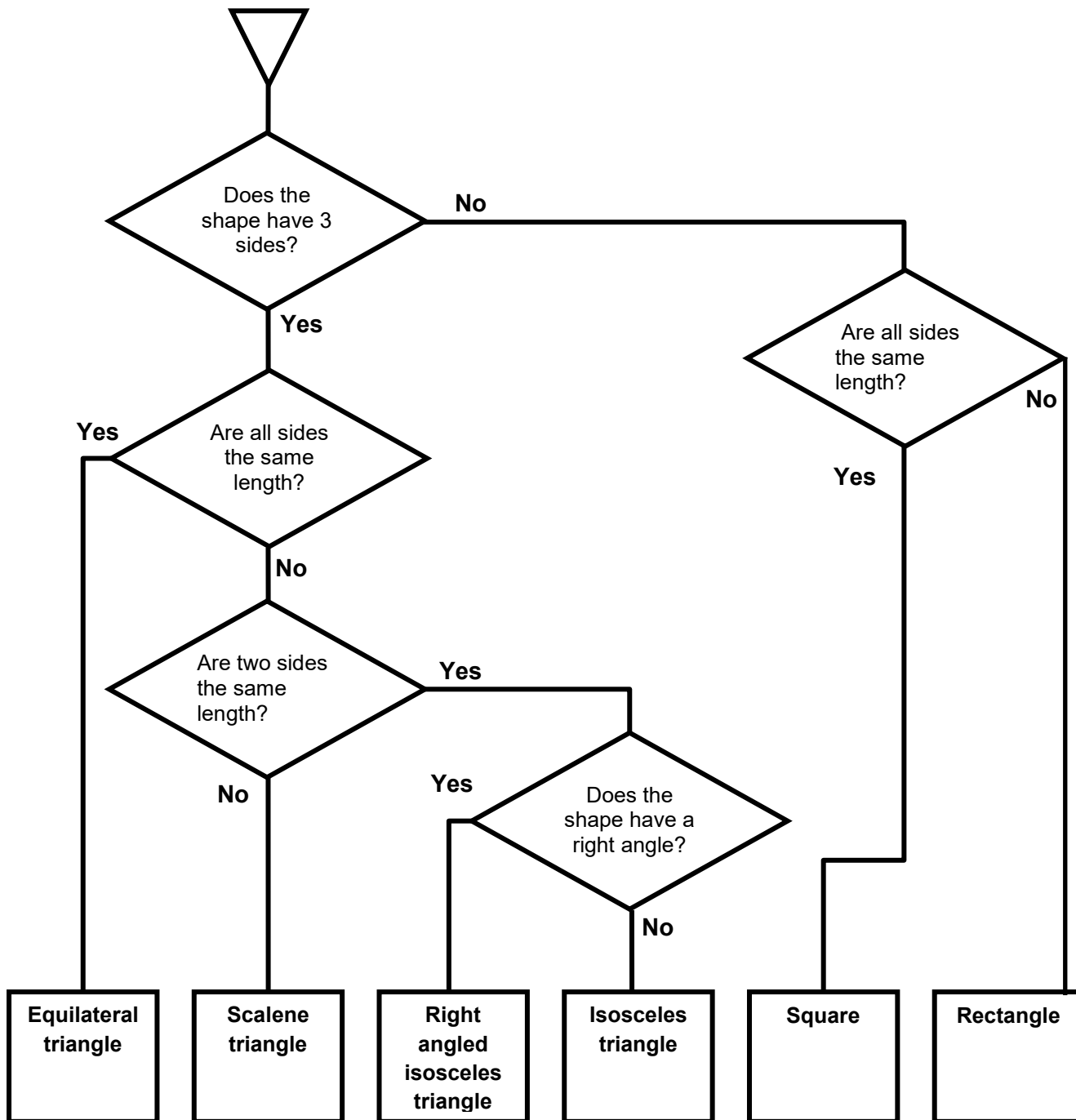
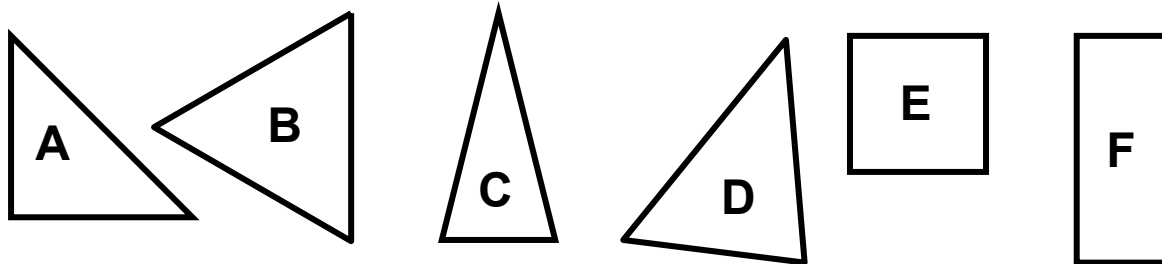
a) Draw some triangles in the different areas of this Venn Diagram. Some have been done for you. *(If it helps, you could photocopy or draw this page larger.)*



b) Draw some shapes in the different areas of this Venn Diagram.



Use this flow chart ('binary tree') to identify these shapes, one at a time.





Answers

Page 1

A and B
C and M
I and L
K and N
D and S
F and R

Page 2

B, C, D, E, G and K

Page 4

A is a right angled isosceles triangle

B is an equilateral triangle

C is an isosceles triangle

D is a scalene triangle

E is a square

F is a rectangle