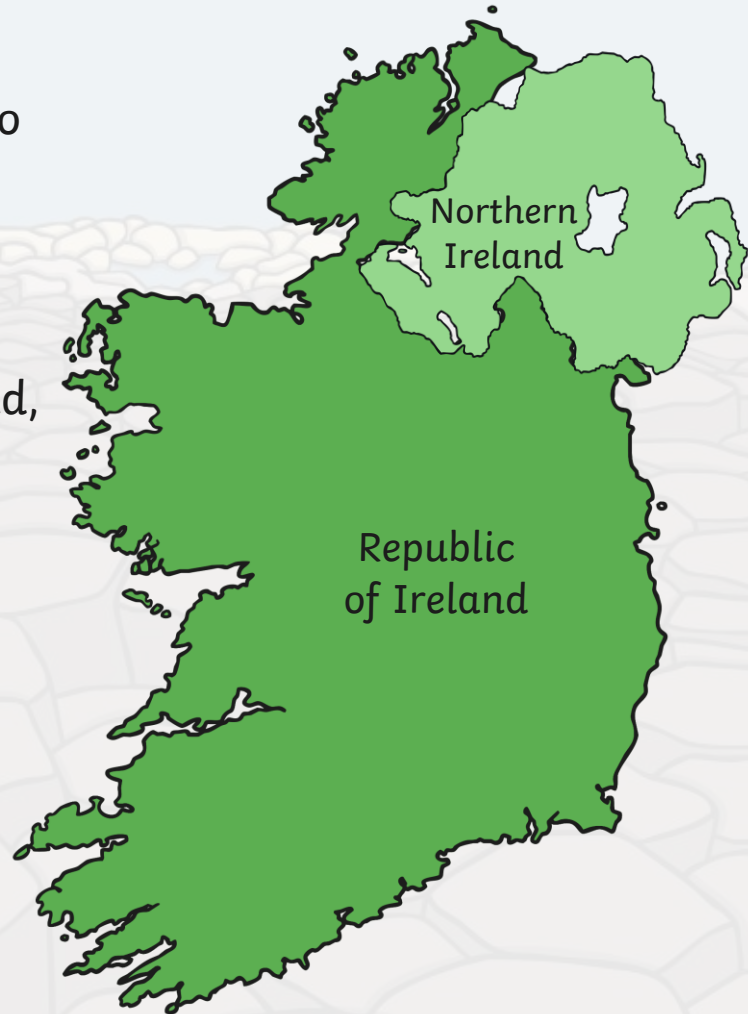




Discover Northern Ireland

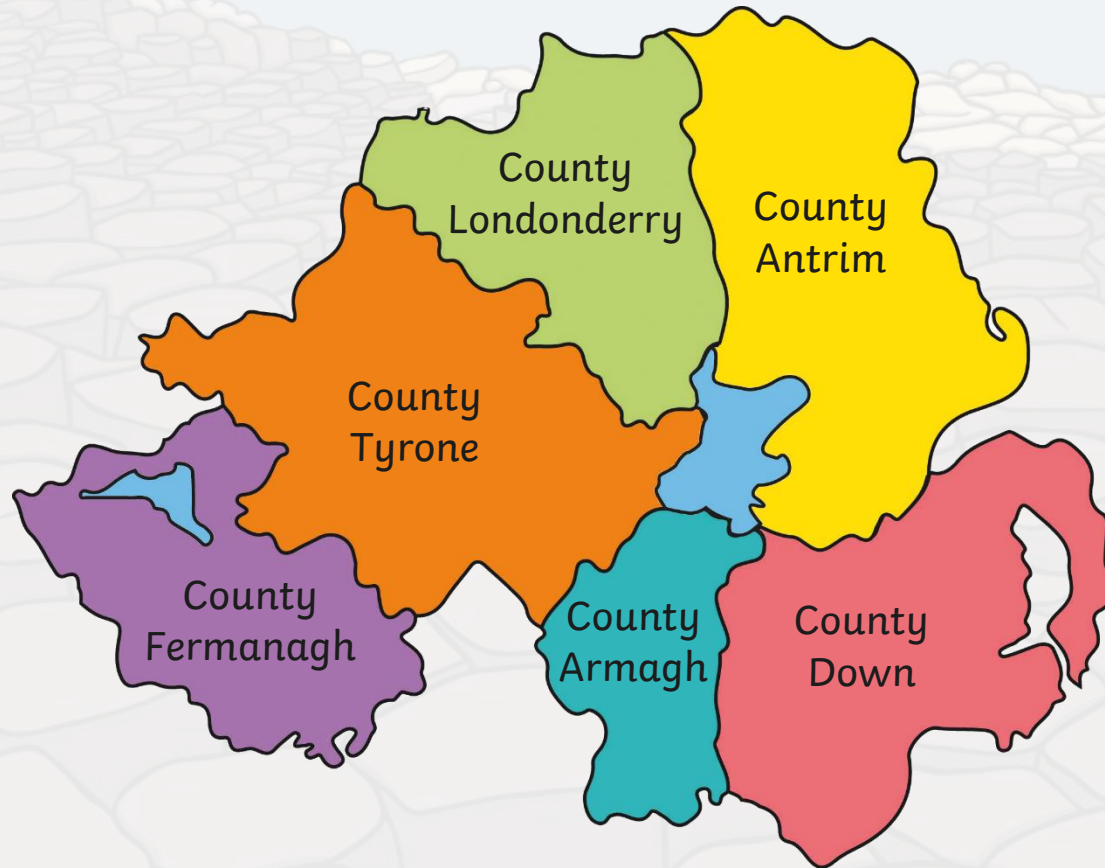
Counties of Northern Ireland

- The island of Ireland is split into two countries: Northern Ireland and the Republic of Ireland.
- Northern Ireland forms part of the United Kingdom, along with Scotland, Wales and England.
- Northern Ireland is split into separate counties.



Counties of Northern Ireland

There are **6 counties** in Northern Ireland.



County Tyrone

- Tyrone was the traditional stronghold of the various O'Neill clans and families, the strongest of the Gaelic Irish families in Ulster.
- Tyrone is the largest county in Northern Ireland (UK).
- It has a population approaching 170,000.
- County Tyrone shares parts of its borders with two Republic of Ireland counties, County Donegal to the west and Monaghan to the South.

County Tyrone

- Tyrone is home to the Beaghmore stone circles.
- They date back to around 4000 years ago, during the early Bronze age.



Photo courtesy of (kiss-tamas@commons.wikimedia.org) - granted under creative commons licence - attribution

The purpose of the stone circles are still a mystery to this day...

Fascinating Facts

- The Parliament buildings in Belfast are named Stormont.
- The government of Northern Ireland meet here.
- Northern Ireland is part of the United Kingdom but it makes its own laws.



Photo courtesy of (robertpaulyoung@flickr.com) - granted under creative commons licence - attribution

Lough Neagh

- Lough Neagh is the Largest lake in the whole of the British Isles.
- Legend says that it was formed by a giant called Finn McCool.
- He scooped up a lump of earth to throw at a rival giant across the sea in Scotland. The dip left behind filled with water to form the lough.



Fascinating Fact

- The Giant's Causeway in County Antrim is made of thousands of hexagonal blocks of stone.
- The rocks were formed by ancient volcanic eruptions.
- Finn McCool is said to have built it so that he could cross the sea to fight Benandonner, a fierce Scottish giant. However Finn McCool's plan didn't work out as he expected....



Photo courtesy of (jenniferboyer@flickr) - granted under creative commons licence - attribution

The Mourne Mountains in County Down

- In County Down lies the Highest Peak in Northern Ireland, Slieve Donard.
- It is 850 metres (2789 feet!) tall. How tall are you?
- Its now quite an easy climb to the top along the new stone path and the views from the top are amazing!

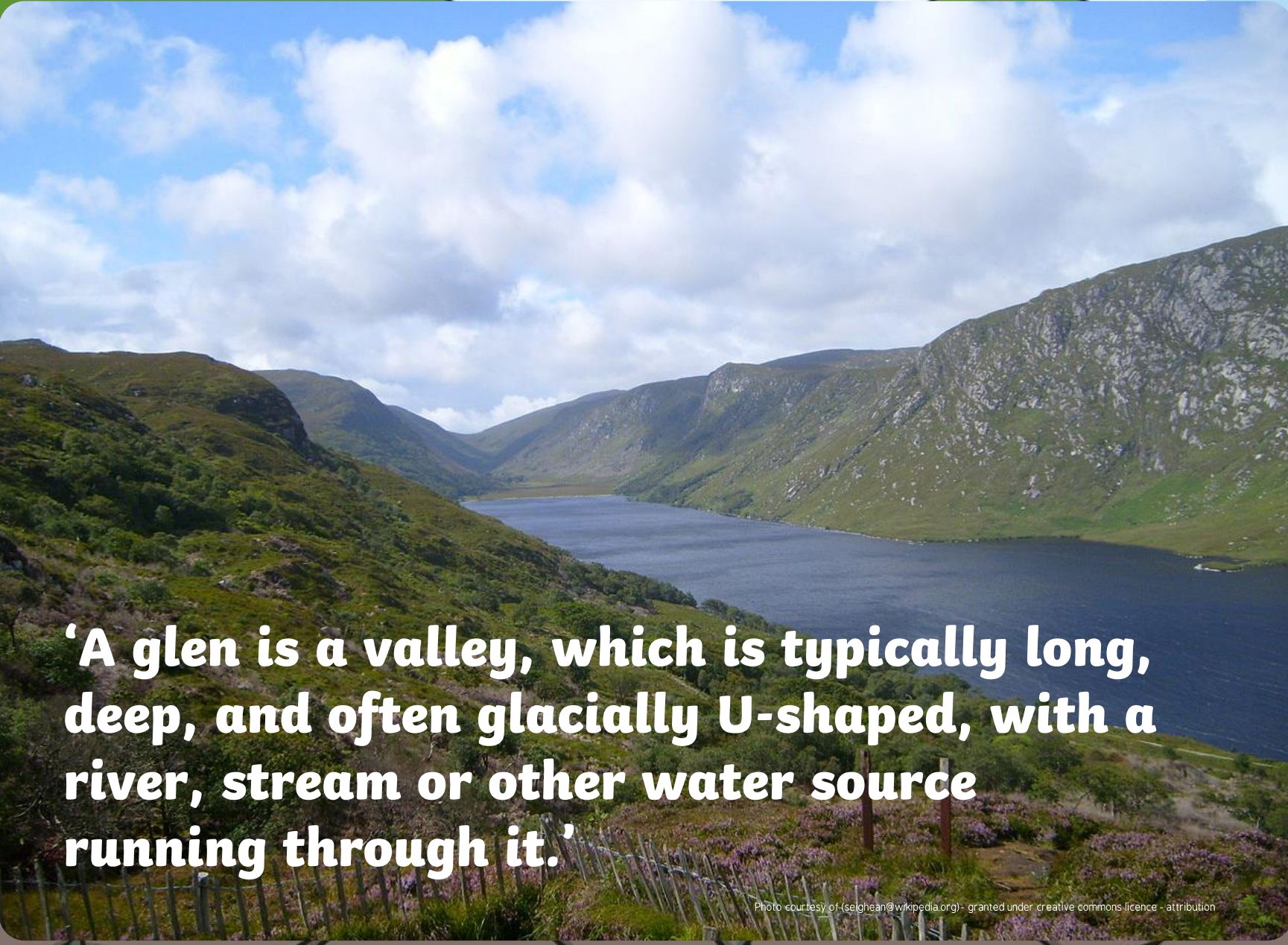


Fascinating Fact

- The 9 Glens of Antrim are one of Northern Ireland's top beauty spots.
- They are valleys carved out by Ice Age glaciers.
- Glenariff is the biggest of these glens.



Photo courtesy of (kateshortforbob@commons.wikimedia.org) - granted under creative commons licence - attribution



‘A glen is a valley, which is typically long, deep, and often glacially U-shaped, with a river, stream or other water source running through it.’

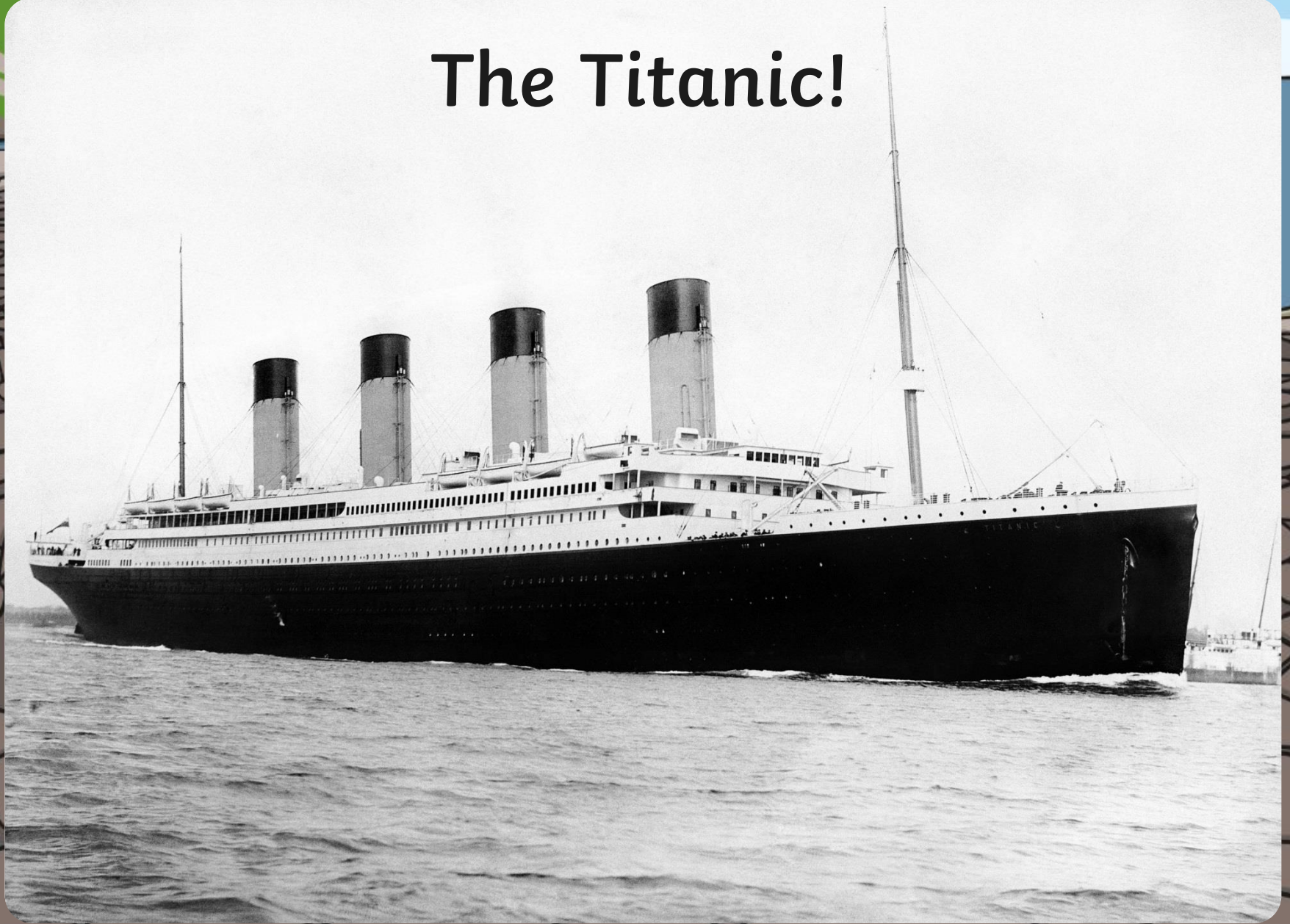
Photo courtesy of (selghean@wikipedia.org) - granted under creative commons licence - attribution

Belfast

- Belfast lies at the mouth of **the River Lagan**, where it flows into **Belfast Lough**.
- Belfast's location made it an important **port** and centre for ship building.
- **Can you tell me a very famous ship that was built in Belfast?**

[Click here to reveal the answer](#)

The Titanic!




Belfast

There are lots of things to see and lots of interesting things to discover about Belfast...

Belfast gets a lot of tourists – last year they spent over 412 million pounds! That's a lot of pocket money!

**Napoleon's Nose
overlooks the city!**

Photo courtesy of (rossographer@geograph.org.uk) - granted under creative commons licence - attribution

A close-up photograph of a tree kangaroo, a marsupial with reddish-brown fur and a white patch on its chest, standing on a weathered log. The background is a blurred natural setting with trees and foliage. The text is overlaid on the upper right portion of the image.

**Belfast Zoo is home to the only
Goodfellow's tree Kangaroo's in
the whole of the United Kingdom
and Ireland.**

Photo courtesy of (richard-ashurst@commons.wikimedia.org) - granted under creative commons licence - attribution

The Albert clock in Belfast isn't straight – it leans 1.25m to the left!

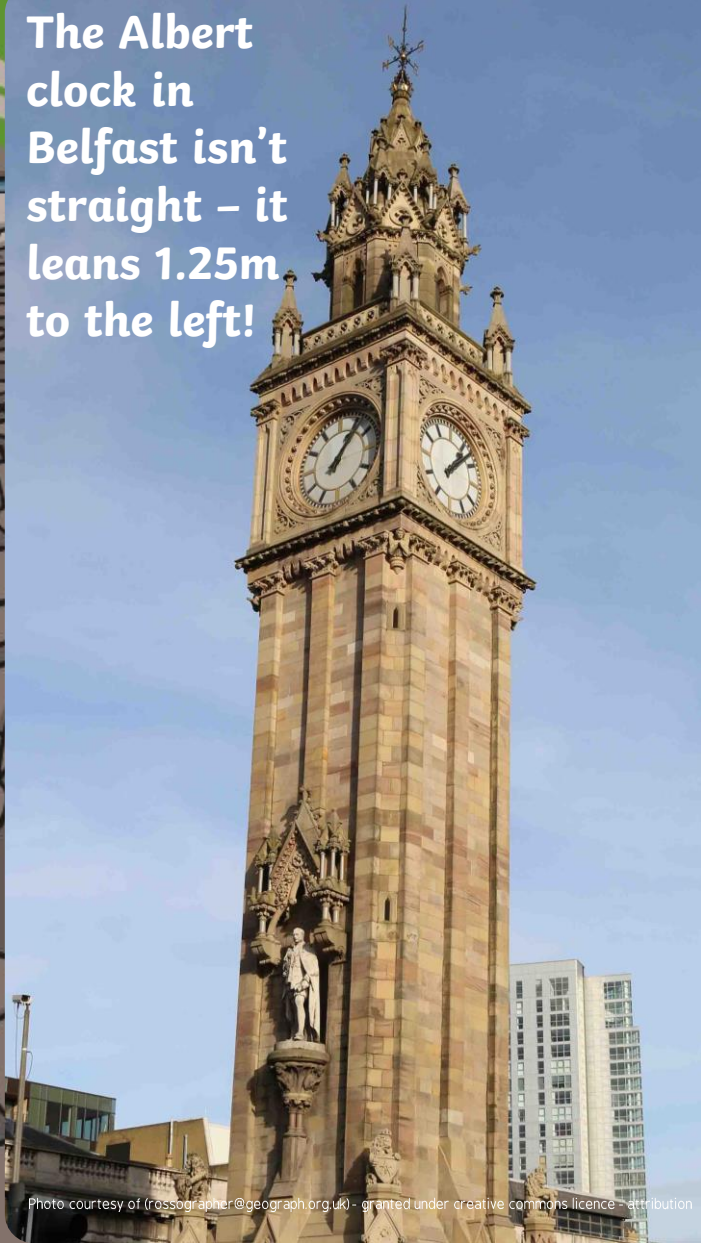


Photo courtesy of (rossographer@geograph.org.uk) - granted under creative commons licence - attribution

Belfast's famous ship building cranes are called Samson & Goliath.



Photo courtesy of (lasse1974@commons.wikimedia.org) - granted under creative commons licence - attribution

Despite being a city, Belfast has over 5000 acres of park area.



Photo courtesy of [richard-ashurst@commons.wikimedia.org](https://commons.wikimedia.org/wiki/Richard_Ashurst) - granted under creative commons licence - attribution

Fascinating Fact

- Derry (officially named Londonderry), is Northern Ireland's second biggest city after Belfast.
- The old city of Derry is surrounded by 400-year-old walls.
- You can walk all the way around the wall to get a **bird's-eye view** of the city.



Photo courtesy of (seanmack@Wikimedia.org) - granted under creative commons licence - attribution

Ulster Scots

- The term Ulster Scots not only refers to original Scots who settled in Ulster, and their descendants but their heritage.
- In Northern Ireland most people speak English, however some people speak Irish and Ulster Scots.

Have a go talking to your neighbour:

Hoo's things?



How are you?

Naw that guid



Not very well

Brave an guid



Very well

If you find these tough, 'Ye cud dae wi a bit mair lairnin!'

Fascinating Fact

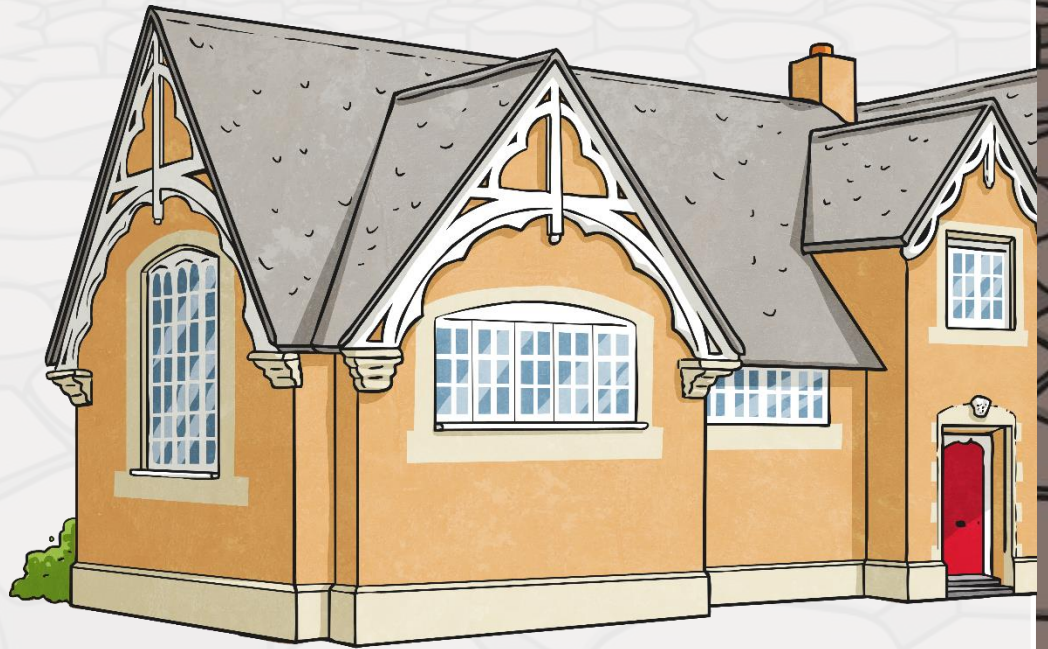
Some of the road signs in Northern Ireland appear in two languages: Irish and English!



Photo courtesy of (night-of-the-big-wind@Wikimedia.org) - granted under creative commons licence - attribution

Northern Ireland Schools

- Northern Irish children start school when they are 4 or 5 years old.
- Most schools teach pupils in English but some schools teach some of their subjects in Irish.
- Schools have long summer holidays (July and August) but they have shorter holidays during the rest of the year.



Discover Northern Ireland - Quiz

Read the questions below, then use the answer buttons to reveal the answer.

1	How many counties are there in Northern Ireland? One point for a correct answer and a bonus point for every one you can name.	Answer
---	--	---------------

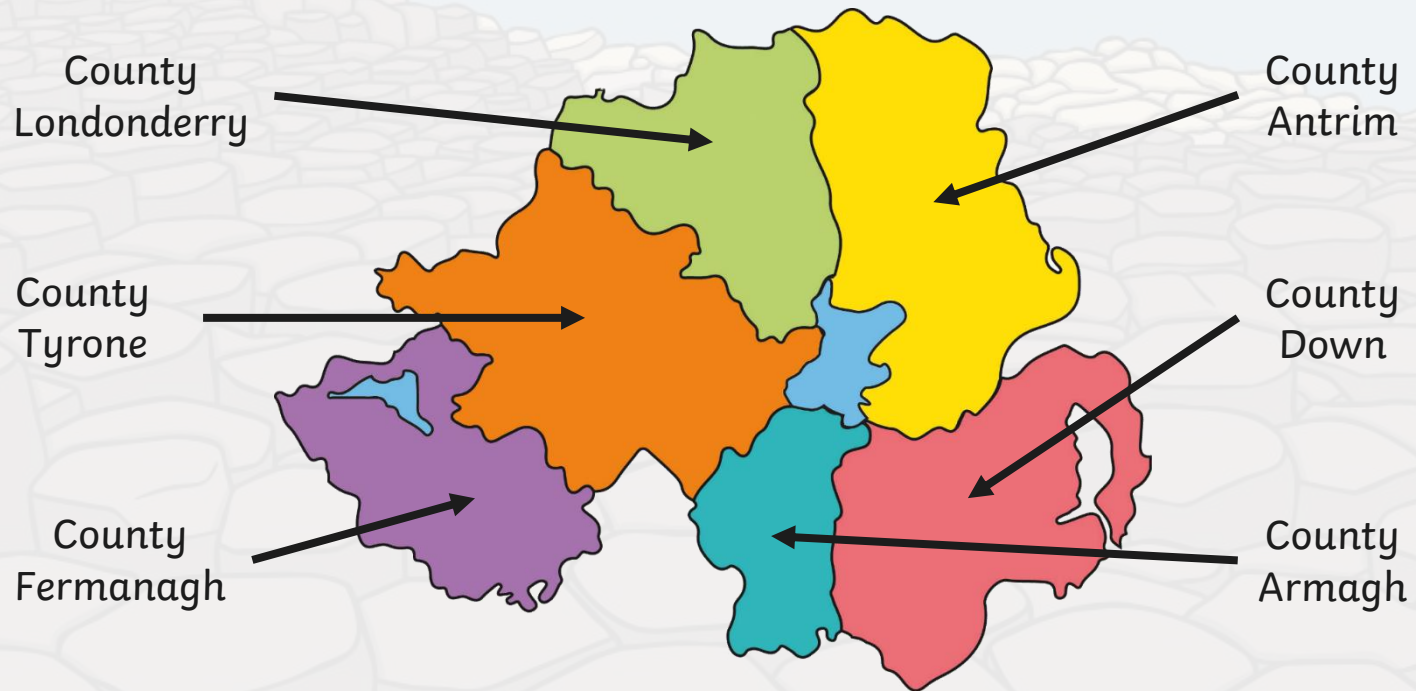
2	Which is the largest of the counties?	Answer
---	---------------------------------------	---------------

3	Parliament buildings are in Belfast. What are they called?	Answer
---	--	---------------

4	Northern Ireland has the largest lake in the United Kingdom – what is it called?	Answer
---	--	---------------

Question 1 - Answer

There are **6 counties** in Northern Ireland.



[Go back to questions](#)

Question 2 - Answer

County Tyrone

[Go back to questions](#)

Question 3 - Answer

Stormont

[Go back to questions](#)

Question 4 - Answer

Lough Neagh

[Go back next questions](#)

Discover Northern Ireland - Quiz

Read the questions below, then use the answer buttons to reveal the answer.

5 **True or False** – Finn McCool was rumoured to have created the lake by digging a hole to bury his treasure?

Answer

6 The Giant's Causeway is famous for its strangely shaped rock formations. What shape are the rocks – pentagonal / hexagonal / heptagonal?

Answer

7 How were the rock formations formed at the Giant's causeway?

Answer

8 In County Down lies the Highest Peak in Northern Ireland, Slieve Donnard – how tall is it?
650m / 850m / 1050m

Answer

Question 5 - Answer

False

Legend has it that the lough was created by Finn McCool, but not by digging a hole! He instead made it by creating a hole with his hands, using the earth to throw at a Scottish rival.

[Go back to questions](#)

Question 6 - Answer

Hexagonol

[Go back to questions](#)

Question 7 - Answer

Volcanic Eruptions

[Go back to questions](#)

Question 8 - Answer

850 metres

[Go to next questions](#)

Discover Northern Ireland - Quiz

Read the questions below, then use the answer buttons to reveal the answer.

9 What is the missing word?
Belfast lies at the mouth of the River _____ ,
where it flows into Belfast Lough.

Answer

10 Belfast has two famous ship building
cranes, what are they called?

Answer

11 Translate into English the following Ulster Scott's
sentence: 'Ye cud dae wi a bit mair lairnin!'

Answer

Question 9 - Answer

Belfast lies at the mouth of the River **Lagan**, where it flows into Belfast Lough.

[Go back to questions](#)

Question 10 - Answer

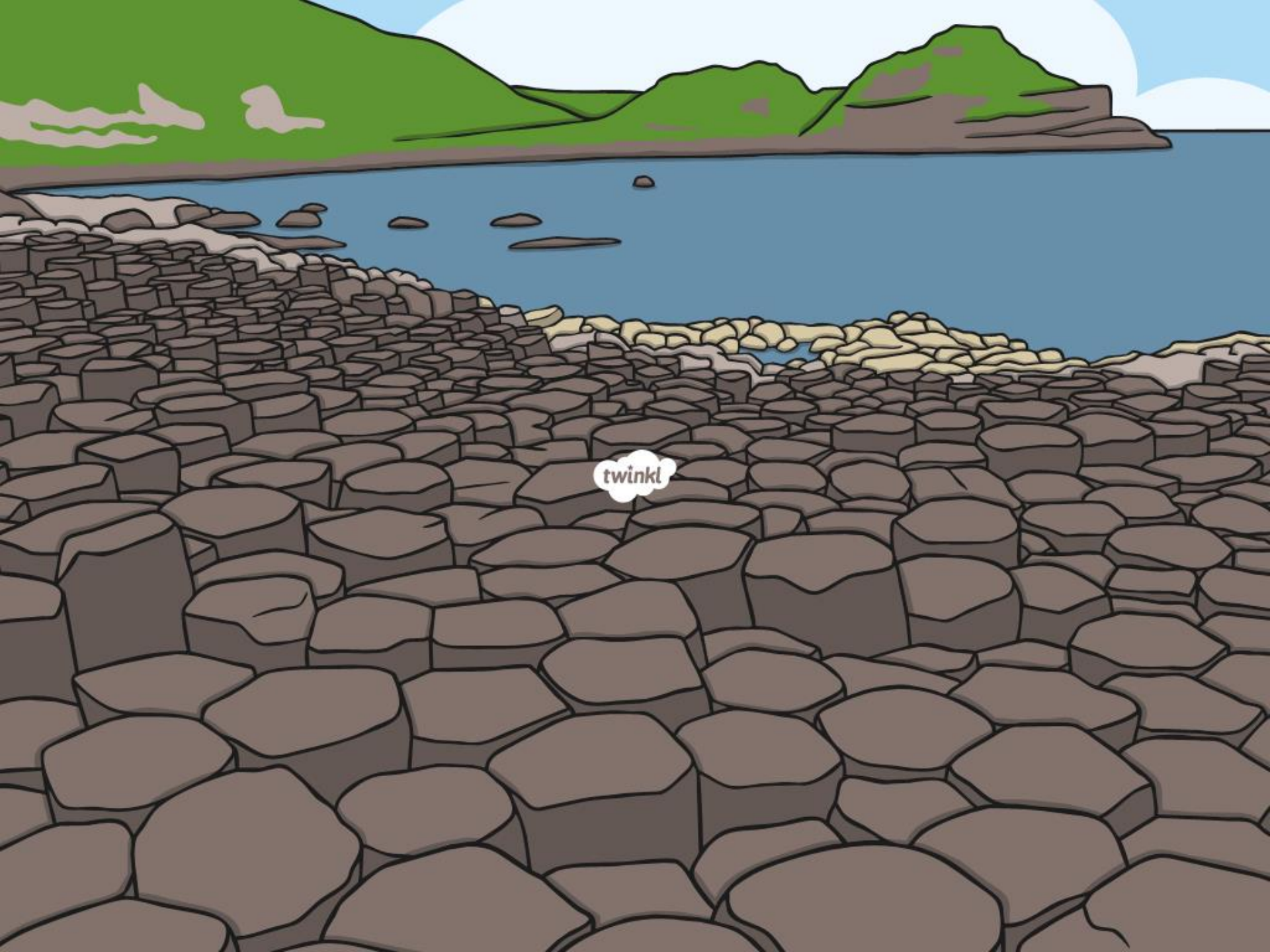
Samson and Goliath

[Go back to questions](#)

Question 11 - Answer

You could do with a wee bit more learning!

End of quiz



twinkl